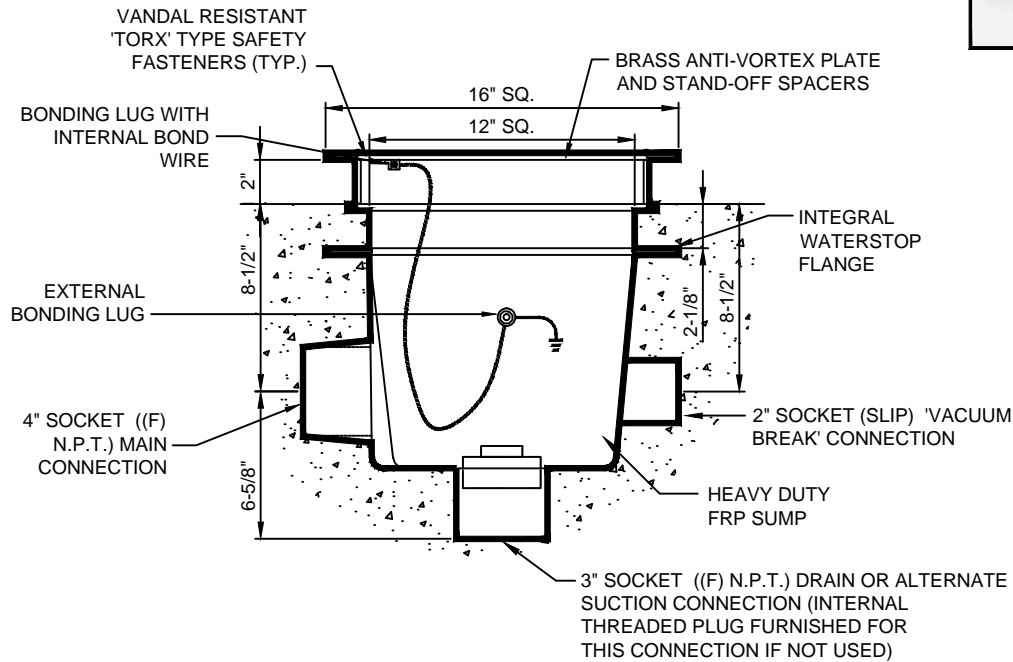




(877) 794-1802

# RAVS-1600-DD, 16" SQUARE DIVERTER PLATE & SUMP ASSEMBLY



**SPECIFICATION DATA:** 16" Square Diverter Plate & Sump Assembly; Heavy Duty FRP sump with integral waterstop flange, 4" side, 3" bottom and 2" 'vacuum break' (socket) connections. (The 3" interior connection shall be provided with a 3" threaded male plug.) Solid brass 3/16" thick diverter plate with brass spacers "TORX" type S.S. vandal resistant safety fasteners and wrench.

**DESIGN/APPLICATION DATA:** Roman Fountains RAVS-1600-DD, diverter plates and sumps are designed for use in fountain and reflecting pools using remote pumping systems. They are designed for used as discharge diffusion devices to return water to the pool without turbulence.

**NOTES:**

1. 128 SQ. inch open area = .638 FPS @ 200 GPM velocity.
2. Recommended maximum flow rate: 200 GPM @ 16" water depth.
3. Due to continuing product improvement program, Roman Fountains reserves the right to change the specifications without notice.