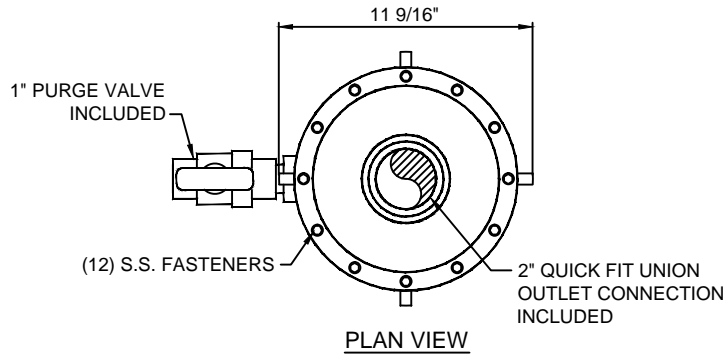


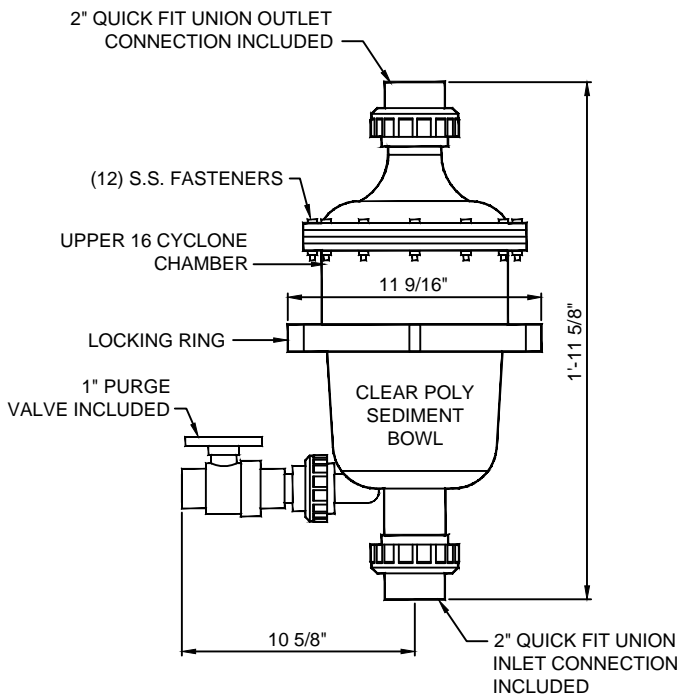


(877) 794-1802

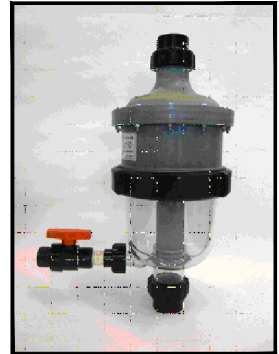
RMC-200, CYCLONIC WATER FILTER



PLAN VIEW



ELEVATION



SPECIFICATION DATA: Cyclonic Water Filter, constructed of a UV stabilized, glass filled reinforced thermoplastic upper chamber with sixteen (16) multiple hydro cyclones, and clear poly carbonate sediment chamber, stainless steel fasteners, lock ring, 1" purge valve connection and two (2) 2" quick fit union inlet and outlet socket connections. Flow rate 13 to 132 GPM @ 58 PSI working pressure. Filtering efficiency down to 30 microns. NSF approved.

NOTE: Due to our continuing product improvement, Roman Fountains reserves the right to change the specifications without notice.

DESIGN/APPLICATION DATA: Roman Fountains RMC-200 is a pre-filter unit which captures 80% of the dirt load before it enters the filter unit. Captured sediment is spiraled down to the lower chamber which is then removed through the 1" purge valve. These units are especially useful on fountains with fine nozzle orifices and 'dirt-sensitive' valves and switches.

NOTE: Complete test reports available.

DRAWING NO.
6.312